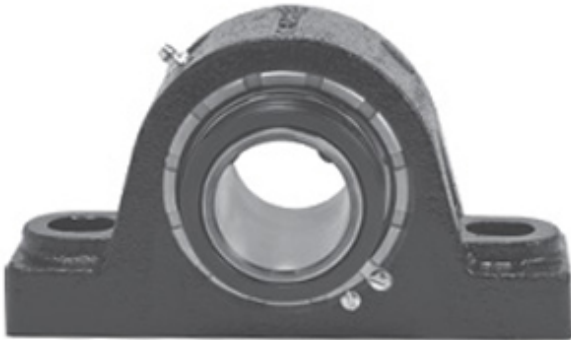




# Shandong Xiangyang Bearing Co., Ltd

2.188 Inch | 55.575 Millimeter x 3.313 Inch |  
84.14 Millimeter x 2.5 Inch | 63.5 Millimeter LINK  
BELT PKEB22435E18W Pillow Block Bearings



Bearing No. PKEB22435E18W

PKEB22435E18W Bearing 2D drawings and 3D CAD models

Category	Pillow Block Bearings
Inventory	0.0
Manufacturer Name	REXNORD
Minimum Buy Quantity	N/A
Weight	7.26
EAN	0793699546910
Product Group	M06288
Number of Mounting Holes	2
Mounting Method	Concentric Collar
Housing Style	2 Bolt Pillow Block
Rolling Element	Spherical Roller Bearing
Housing Material	Cast Steel
Expansion / Non-expansion	Expansion
Mounting Bolts	5/8 Inch
Relubricatable	Yes
Insert Part Number	B22435EL
Seals	Spring Loaded Lip
Housing Configuration	1 Piece Solid
Inch - Metric	Inch
Other Features	Double Row   Single Collar   Extended Inner Race   With Set Screw
Long Description	2 Bolt Pillow Block; 2-3/16" Bore; 2-1/2" Base to Center Height; Concentric Collar Mount; Spherical Roller



## Shandong Xiangyang Bearing Co., Ltd

	Bearing; Relubricatable; Cast Steel; Spring Loaded Lip; Expansion
Category	Pillow Block
UNSPSC	31171511
Harmonized Tariff Code	8483.20.40.80
Noun	Bearing
Keyword String	Pillow Block
Manufacturer URL	<a href="http://www.rexnord.com">http://www.rexnord.com</a>
Manufacturer Item Number	PKEB22435E18W
Manufacturer Internal Number	0154691
Weight / LBS	16
D	3.313 Inch   84.14 Millimeter
Bolt Spacing Minimum	0 Inch   0Millimeter
Bolt Spacing Maximum	0 Inch   0Millimeter
d	2.188 Inch   55.575 Millimeter
Nominal Bolt Center to Center	6.8 Inch   171.5 Millimeter
Actual Bolt Center to Center	6.8 Inch   171.5Millimeter
B	2.5 Inch   63.5 Millimeter